



# Bearn's Voluntary Primary School

Queen Street, Newton Abbot, Devon. TQ12

2AU

Tel: 01626 353980

Email: [adminbearn's@thelink.academy](mailto:adminbearn's@thelink.academy)



19/3/2020

Dear Parents/Carers,

## Re: Coronavirus update – school closure to most pupils

Following on from my last update, I am writing to let you know that **we have now been instructed to close the school to almost all children after this Friday until further notice.**

As advised by the government, we will do all we can to stay open for the children of key workers (e.g. NHS staff, police, others in frontline services) and children with an EHCP or under the support of Social Services.

We are waiting for the government to publish more information on what this means, but it would help us in the meantime if you could let us know by 11am tomorrow (20/3/2020) if you think your child may fall into one of these categories. We'll be in touch again as soon as we are sure who this does apply to. With social contact being limited, it is vital that we accept only children who meet the criteria.

Bearn's will be a Hub school for such families and will be open from 8am-4pm, being staffed on rotation by members of teaching staff from across the Trust.

**All other children will need to stay at home, so we ask that you do not send your child into school from Monday onwards.** Please note that this is a national closure – as you may have heard in the news – so while it is a challenging situation, we are not alone. We'll re-open fully as soon as we can and will let you know when this is by text and on our Facebook page.

## What we'll continue doing while your child is at home

Your child's learning is of course important to us, so we'll continue to help your child to learn through high quality tasks. Staff have spoken to all children today and made it very clear that there is an expectation for children to engage with home learning. Teachers will be in regular email contact with families to check in on learning and ensure families feel well supported. Don't be surprised to get the odd phone call - we'll be feeling quite lonely in school!

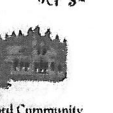
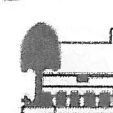
Today your child will be issued with their own log in for the SeeSaw app if they are in Chestnuts, Sycamores or Redwoods. Please follow the instructions given by class teachers who will be able to support with log in issues and accessing home learning ~ do bear with us, it's a new system and there may well be teething problems. If your child is in EYFS they will continue to use Tapestry to access open ended, play based learning. Learning packs have also been sent home today for next week's learning. Please also go to our school website where you will find suggested websites under the 'E-learning tab'. If you have no internet access at all please inform us so that we can provide an alternative.

This is as much as we know right now and we appreciate your continued patience as we deal with this ever-changing situation. We understand that this latest news will have an impact on you and your family and it's far from ideal, but we'll continue to keep in touch with any updates as the situation develops.

Link Academy Trust – Registered Office Address

Landscape School, Landscape, Ashburton, Newton Abbot, Devon. TQ13 7LY

Tel:- 01803 762113 Email:- [admin@thelink.academy](mailto:admin@thelink.academy)



Thank you again for your continued support in an unprecedented time, we hope that you remain safe and healthy and we will be in touch with more information towards the end of next week with our next steps strategy. Our strong school community will play a valuable role over the coming weeks.

Kind regards



Alice Eeles

Academy Head

Link Academy Trust – Registered Office Address  
Landscape School, Landscape, Ashburton, Newton Abbot, Devon.TQ13 7LY  
Tel:- 01803 762113 Email:- [admin@thelink.academy](mailto:admin@thelink.academy)

